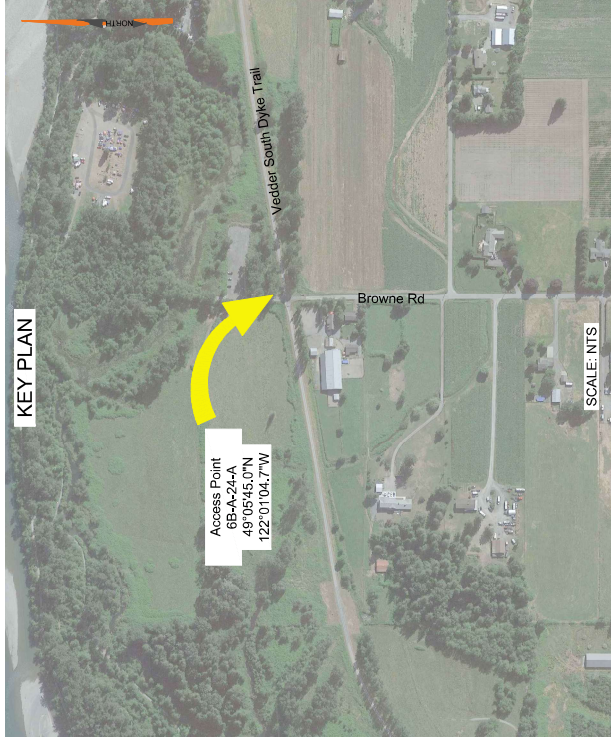


KEY PLAN



SITE ID: AP-6B-A-24-A		POSTED SPEED, km/h	50
CATEGORY 1 - BROWNE RD / VEDDER SOUTH DYKE TRAIL	ANTICIPATED SAFT, VEH / DAY	ANTICIPATED SAFT, VEH / DAY	NA
NOTE: TRAFFIC DATA IS ESTIMATED FROM TAC GEOMETRIC DESIGN GUIDE FOR CANADIAN ROADS			
TCP NUMBER	01-13283-S6-M002-HS-PLN-0438	DURATION OF WORK	LONG
RISK ASSESSMENT REVISION	SEE APPENDIX F	OVERLAPPING STRATEGY DOCUMENT	(01-13283-SG-M002-GN-PRO-0001 R0)

DYNAMIC MESSAGE SIGN SEQUENCE*			
CYCLE 1		CYCLE 2	
PHASE 1 (3 SEC) ROAD AHEAD	PHASE 2 (3 SEC) CONSTRUCTION TRAFFIC ONLY	PHASE 1 (3 SEC) ROAD CLOSED AHEAD	PHASE 2 (3 SEC) CONSTRUCTION TRAFFIC ONLY

* PDMS MESSAGE MAY BE MODIFIED PER SITE CONDITIONS

SEAL:

PERMIT TO PRACTICE
WATT CONSULTING GROUP LTD

SIGNATURE _____

DATE _____

PERMIT NUMBER: 1001432
ENGINEERS & GEOSCIENTISTS
BRITISH COLUMBIA

GENERAL NOTES:

- PIPELINE AND ACCESS LOCATIONS TO BE CONFIRMED ON SITE BY THE CONTRACTOR. TRAFFIC CONTROL MEASURES SHALL BE LAID OUT FROM THE EDGE OF THE ACCESS.
- ALL SIGNS SHALL MEET BC MINISTRY OF TRANSPORTATION AND INFRASTRUCTURE (BC MOTI) SPECIFICATIONS FOR STANDARD HIGHWAY SIGN MATERIALS, FABRICATION, SUPPLY, INSTALLATION AND MAINTENANCE. CONTRACTOR IS TO NOTIFY THE TRAFFIC ENGINEER IF TRAFFIC CONTROL MEASURES OVERLAP WITH ADJACENT ACCESS MANAGEMENT PLAN.
- CONTRACTOR TO COVER ALL EXISTING CONFLICTING REGULATORY SIGNS WHEN THIS TRAFFIC CONTROL LAYOUT IS IMPLEMENTED AND ACTIVE.
- CONTRACTOR TO PLACE SIGNS SUCH THAT DRIVEWAY ACCESSES AND ROAD CROSSINGS ARE NOT IMPACTED.
- FOR CONSTRUCTION TIMING AND DURATION, REFER TO THE PERMIT OF THIS LOCATION. THE KEY WORK ACTIVITIES WILL INCLUDE, BUT NOT LIMITED TO: EQUIPMENT MOBILIZATION, MATERIAL STAGING, PIPELINE AND PUMP STATION CONSTRUCTION AND EQUIPMENT DEMOBILIZATION. REFER TO THE TRAFFIC AND ACCESS CONTROL MANAGEMENT PLAN (TMAMP) FOR GENERAL RESTRICTIONS, SPECIAL EVENTS, AND OTHER CONDITIONS ASSOCIATED WITH EACH SITE.
- THE CONSTRUCTION TRAFFIC WILL COMPOSE OF TRUCKS HAULING EQUIPMENT AND MATERIALS AS WELL AS CREW TRANSPORT TO ACCESS TO/FROM THE WORKS. THE ESTIMATED VOLUME (REFER TO PERMIT) MAY RESULT IN MINOR REDUCTION OF SPEED UP TO 30km/h, AND/OR TEMPORARY STOPPING WITH AVERAGE DELAY LESS THAN 5 MINUTES, AND NO LONGER THAN 15 MINUTES.
- THE SPEED USED FOR THE TRAFFIC CONTROL MEASURES IS AS PROVIDED BY THE CONTRACTOR. CONTRACTOR TO CONFIRM ON SITE, IN TIMES OF MINIMAL ACTIVITY AT ANY PERMANENT ACCESS, ADVANCE WARNING TRUCK TURNING (W-377) SIGNS AND OTHER SUPPLEMENTAL SIGNS AS REQUIRED BY THE MINISTRY REPRESENTATIVE ARE TO BE ERCTED ON EITHER SIDE OF THE ACCESS IN ACCORDANCE WITH THE LATEST VERSION OF THE MINISTRY OF TRANSPORTATION AND INFRASTRUCTURE MANUAL OF STANDARD TRAFFIC SIGNS AND PAVEMENT MARKINGS, AND IN COMPLIANCE WITH ACCESS MANAGEMENT PLANS SPECIFIC TO EACH LOCATION, AS ACCEPTED BY THE MINISTRY.
- IN TIMES OF MINIMAL ACTIVITY AT ANY TEMPORARY ACCESS, ADVANCE CONSTRUCTION TRUCK TURNING (W-172) SIGNS AND OTHER SUPPLEMENTAL SIGNS AS REQUIRED BY THE DESIGNATED DISTRICT OFFICIAL ARE TO BE ERCTED ON EITHER SIDE OF THE ACCESS IN ACCORDANCE WITH THE LATEST VERSION OF THE MINISTRY OF TRANSPORTATION AND INFRASTRUCTURE MANUAL OF STANDARD TRAFFIC SIGNS AND PAVEMENT MARKINGS, AND IN COMPLIANCE WITH ACCESS MANAGEMENT PLANS SPECIFIC TO EACH LOCATION, AS ACCEPTED BY THE MINISTRY.
- CONTRACTOR IS RESPONSIBLE FOR PLACING CONSTRUCTION WARNING SIGNS (C018-1A, C-029) ALONG ALL SIDE STREET APPROACHES WITHIN THE CONSTRUCTION SIGNAGE LIMITS OF THE ACCESS, AS NEEDED.
- THIS TRAFFIC CONTROL SETUP IS TO BE USED DURING DAYLIGHT HOURS, FOR NIGHT OPERATIONS OR TRAFFIC CONTROL SETUP IN THE HOURS OF DARKNESS AS PER THE HOURS OF THE APPROVED PERMIT/H1080. THE FOLLOWING IS REQUIRED TO CONFORM WITH THE MINISTRY'S REQUIREMENTS PER THE BC MOTI TRAFFIC MANAGEMENT MANUAL FOR WORK ON ROADWAYS (TM):
 - OVERHEAD LIGHTING SHALL BE USED TO ILLUMINATE THE WORK ACTIVITY AREA, EQUIPMENT CROSSINGS, AND OTHER POTENTIALLY HAZARDOUS AREAS.
 - TCP APPAREL AND EQUIPMENT SHALL COMPLY WITH THE TM REQUIREMENTS (INCLUDING ILLUMINATED BATONS).
 - TM RETROREFLECTIVE STANDARDS AND INSPECTION REQUIREMENTS FOR ALL TRAFFIC CONTROL DEVICES MUST BE MET.
 - ALL THE DETAILS AND PROCEDURES ASSOCIATED WITH AUTOMATED FLAGGER ASSISTED DEVICE (AFAD) SHALL BE COMPLIANT WITH SECTION 407 OF THE TM 2020.
 - THE AFAD SHALL BE ILLUMINATED WITH OVERHEAD LIGHTING AS PER TM SECTION 47.2 AND 7.9.
 - CONTRACTOR TO RESTORE THE ROAD TO ORIGINAL CONDITION AFTER PIPELINE CONSTRUCTION.
 - APPENDIX F OF TRAFFIC CONTROL PLAN DETAILS: A) RISK ASSESSMENT, B) AFAD (AUTOMATED FLAGGER ASSISTED DEVICE) AND TCP REQUIREMENTS AND OPERATIONS PER WORKSAFE BC PART 18 OHSR, C) THE ENVIRONMENTAL TRAFFIC RISKS SPECIFIC TO THIS SITE, SIGN DISTANCE SPECIFIC TO THE SITE BE DETAILED UNDER DRIVER SIGHT DISTANCES 2.1, SITE FACTORS (RISK ASSESSMENT) AND IN APPENDIX F.
 - THERE WILL NOT BE ANY STORAGE OF MATERIALS WITHIN THE ROADWAY IN THE CLEAR ZONE (UNLESS APPROVED BY EOR) THAT IMPEDE THE SIGHT LINES AT THE ACCESS POINT.
 - WHEN TWO OR MORE ACTIVE ACCESS POINTS ARE IN CLOSE PROXIMITY TO EACH OTHER, THE SIGN SET UP AND TRAFFIC CONTROL WILL COMPLY WITH OVERLAPPING TRAFFIC CONTROL STRATEGY AS PER SECTION 2.3 WORK ZONES IN CLOSE PROXIMITY IDENTIFIED.
 - THE CONTENT OF THIS DRAWING REPRESENTS INFORMATION GATHERED AT THE TIME OF ITS DEVELOPMENT. THE WORK ZONE WILL BE REVIEWED AT THE TIME OF IMPLEMENTATION AND, IF THERE ARE SIGNIFICANT CHANGES OR ITEMS NOT CONSIDERED PROPERLY, THE DRAWING AND THE HAZARD ASSESSMENT WILL BE UPDATED ACCORDINGLY.

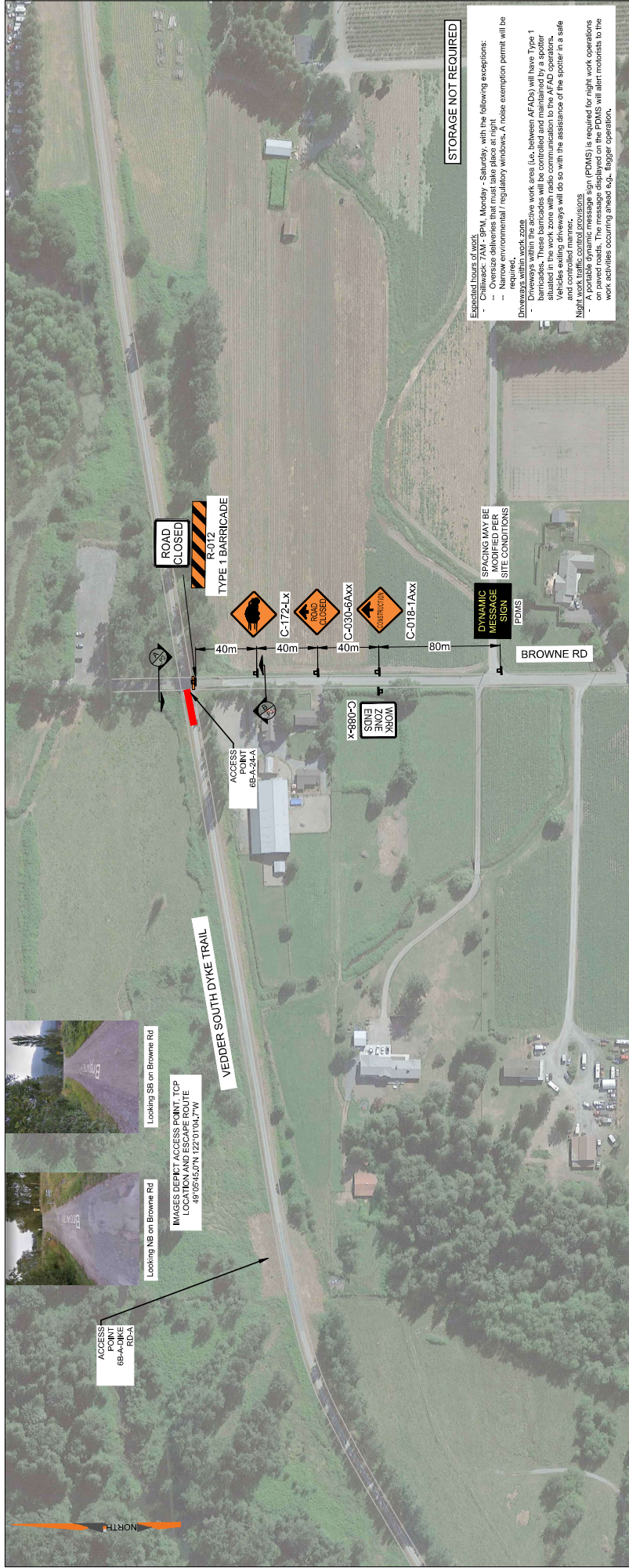
LIST OF DRAWINGS	
NO.	TITLE
6B-A-24-A_P1	TRAFFIC CONTROL LAYOUT PLAN COVER SHEET
6B-A-24-A_P2	TRAFFIC CONTROL LAYOUT PLAN

TRAFFIC CONTROL LAYOUT
AP 6B-A-24-A
BPLP TMEP SPREAD 6B

Calgary, Edmonton, Lloydminster,
Okanagan, Vancouver, Victoria
WATT Consulting Group
WATTCONSULTINGGROUP.COM

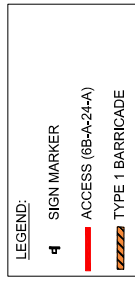
REVISIONS	SCALE:	NOT TO SCALE	DESIGNED:	CHECKED:	APPROVED:
0 ISSUED FOR IMPLEMENTATION	FEB 15-23		CK	CK	KM
1 ISSUED FOR IMPLEMENTATION	FEB 19-23		CK	CK	KM
2					
3					
4					
5					
6					
7					
8					

PROJECT NO: 3431.B01
DRAWING NO: 6B-A-24-A_P1
DATE: FEB 15, 2023
REVISION: 1



STORAGE NOT REQUIRED

Expected hours of work:
 - Monday - Saturday, with the following exceptions:
 - Oversize deliveries that must take place at night
 - Narrow environmental / regulatory windows. A noise exemption permit will be required.
Days with no work:
 - Days with no work
Days with limited work:
 - Days with limited work (i.e. between AFADs) will have Type 1 barricades. These barricades will be controlled and maintained by a spotter situated in the work zone with radio communication to the AFAD operators. Vehicles exiting driveways will do so with the assistance of the spotter in a safe manner.
Night work traffic control provisions:
 - A portable dynamic message sign (PDMS) is required for night work operations on paved roads. The message displayed on the PDMS will alert motorists to the work activities occurring ahead (e.g., flagger operation).



TRAFFIC CONTROL LAYOUT
AP 6B-A-24-A
BPLP TMEP SPREAD 6B

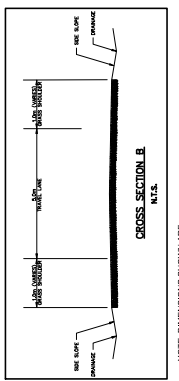
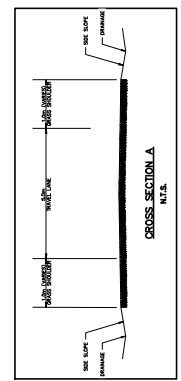
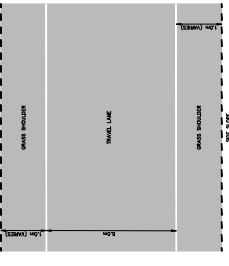
Calgary, Edmonton, Lloydminster,
 Okanagan, Vancouver, Victoria
WATT
 Consulting Group
 WATTCONSULTINGGROUP.COM

DESIGNED: 12.000	CHECKED: 12.000	APPROVED: 12.000
CK	CK	CK
CK	CK	CK
DESIGN SPEED: 50 km/h	DESIGN VEHICLE: 50 km/h	
PROJECT NO: 3431.B01	DRAWING NO: 6B-A-24-A_P2	
DATE: FEB 15, 2023	REVISION: 1	

REVISIONS	ISSUED FOR IMPLEMENTATION	DATE
0	ISSUED FOR IMPLEMENTATION	FEB 15-23
1	ISSUED FOR IMPLEMENTATION	FEB 15-23
2		
3		
4		
5		
6		
7		
8		

SEAL:

PERMIT TO PRACTICE
 WATT CONSULTING GROUP LTD
 SIGNATURE _____
 DATE _____
 PERMIT NUMBER: 1001432
 ENGINEERS & GEOSCIENTISTS
 BRITISH COLUMBIA



NOTE DIMENSIONS SHOWN ARE SITE SPECIFIC

NOTE DIMENSIONS SHOWN ARE SITE SPECIFIC